



Department of Public Works
Engineering Division
 Robert F. Phillips, P.E., City Engineer
 City-County Building, Room 115
 210 Martin Luther King, Jr. Boulevard
 Madison, Wisconsin 53703
 Phone: (608) 266-4751
 Fax: (608) 264-9275
engineering@cityofmadison.com
www.cityofmadison.com/engineering

Assistant City Engineer
 Michael R. Dailey, P.E.
Principal Engineer 2
 Gregory T. Fries, P.E.
Principal Engineer 1
 Christina M. Bachmann, P.E.
 Eric L. Dundee, P.E.
 John S. Fahrney, P.E.
 Christopher J. Petykowski, P.E.
Facilities & Sustainability
 Jeanne E. Hoffman, Manager
Operations Manager
 Kathleen M. Cryan
Mapping Section Manager
 Eric T. Pederson, P.S.
Financial Manager
 Steven B. Danner-Rivers

May 3, 2017

**NOTICE OF ADDENDUM:
 ADDENDUM 1**

**CONTRACT NO. 7895
 HUGHES PLACE STORM RELIEF AND RESURFACING - 2017**

Revise and amend the contract document(s) for the above project as stated in this addendum, otherwise, the original document shall remain in effect.

Revise and amend the contract document(s) for the above project as stated in this addendum, otherwise, the original document shall remain in effect.

PLANS:

REMOVE

- Remove Sheets W-1 to W-4

INSERT

- Insert Sheets W-1 to W-4 (revised 4-28-17)
 - W-1: Relocate hydrant at Cypress Way and revise valves at STA 24+27.
 - W-2: Reprint to depict correct storm sewer design.
 - W-3: Revised to reflect design changes shown on sheet W-1.
 - W-4: Revised to reflect design changes shown on sheet W-1.

SPECIAL PROVISIONS:

None

PROPOSAL:

A summary of the changes to the proposal is as follows:

Action	Bid Item	Description	Quantity	Units
ADD ITEM	30131	COLD WEATHER PROTECTION OF CONCRETE SIDEWALK & DRIVE (POLYETHYLENE)	300.00	L.F.
ADD ITEM	30132	COLD WEATHER PROTECTION OF CONCRETE CURB & GUTTER (POLYETHYLENE)	300.00	L.F.
MODIFY Item Number	50791	SANITARY SEWER TAP	1	EACH
MODIFY QUANTITY	70002	FURNISH AND INSTALL 6 INCH PIPE & FITTINGS	90	L.F.

MODIFY QUANTITY	70003	FURNISH AND INSTALL 8 INCH PIPE & FITTINGS	840	L.F.
MODIFY QUANTITY	70031	FURNISH AND INSTALL 6-INCH WATER VALVE	6.00	EACH
MODIFY QUANTITY	70032	FURNISH AND INSTALL 8-INCH WATER VALVE	2.00	EACH
VERIFY (No Change)	70040	FURNISH, INSTALL AND SALVAGE HYDRANT	3.00	EACH
ADD ITEM	70053	REPLACE 1-INCH COPPER SERVICE LATERAL	1.00	EACH
ADD ITEM	70056	RECONNECT 1-INCH SERVICE LATERAL	4.00	EACH
VERIFY (No Change)	70080	CUT-IN-OR CONNECT TO EXISTING WATER SYSTEM	4.00	EACH
ADD ITEM	70081	FURNISH EXCAVATION AND DITCH FOR LIVE TAP	1	EACH
ADD ITEM	70082	CUT OFF EXISTING WATER MAIN	2	EACH
MODIFY QUANTITY	70090	ABANDON WATER VALVE BOX	5.00	EACH
MODIFY QUANTITY	70101	FURNISH AND INSTALL STYROFOAM	64.00	L.F.

Please acknowledge this addendum on page E1 of the contract documents and/or in Section E: Bidder's Acknowledgement on Bid Express.

Electronic version of these documents can be found on the Bid Express web site at:

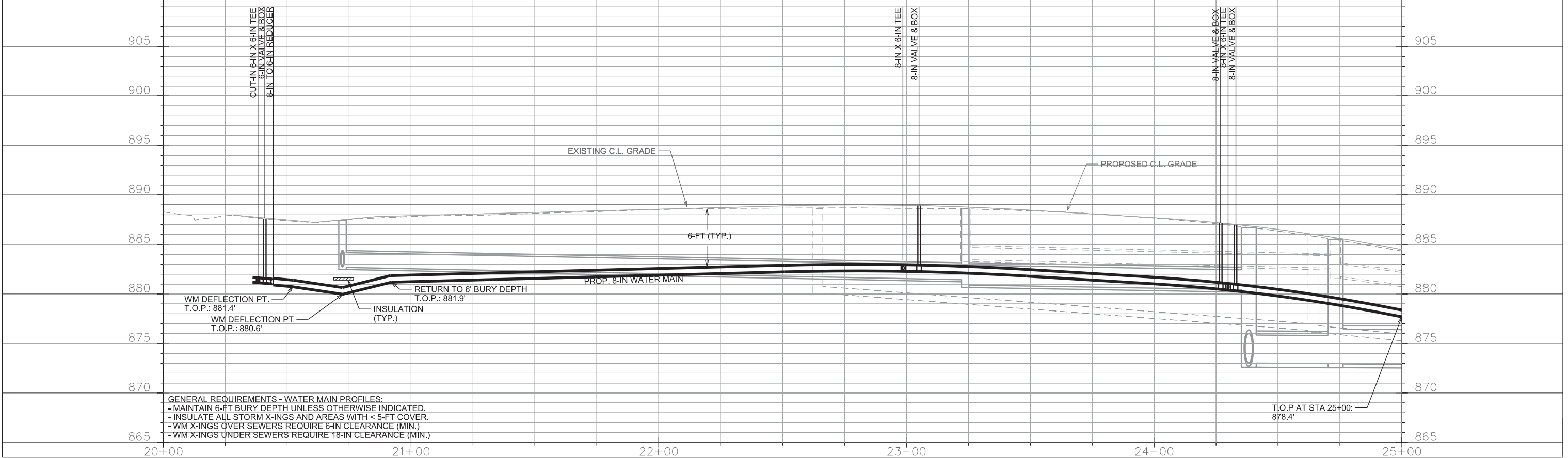
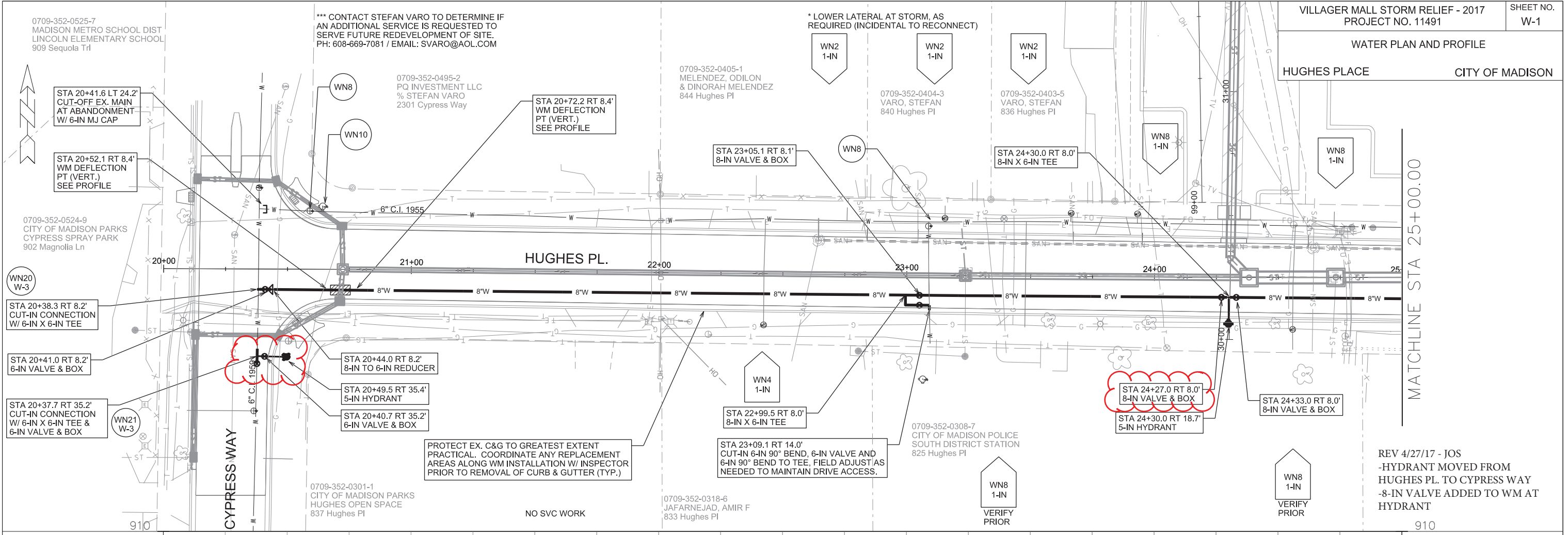
<http://www.bidexpress.com>

If you are unable to download plan revisions associated with the addendum, please contact the Engineering office at 608-266-4751 receive the material by another route.



Robert F. Phillips, P.E., City Engineer

RFP: arw



GENERAL REQUIREMENTS - WATER MAIN PROFILES:
 - MAINTAIN 6-FT BURY DEPTH UNLESS OTHERWISE INDICATED.
 - INSULATE ALL STORM X-INGS AND AREAS WITH < 5-FT COVER.
 - WM X-INGS OVER SEWERS REQUIRE 6-IN CLEARANCE (MIN.)
 - WM X-INGS UNDER SEWERS REQUIRE 18-IN CLEARANCE (MIN.)

REV 4/27/17 - JOS
 -HYDRANT MOVED FROM HUGHES PL. TO CYPRESS WAY
 -8-IN VALVE ADDED TO WM AT HYDRANT

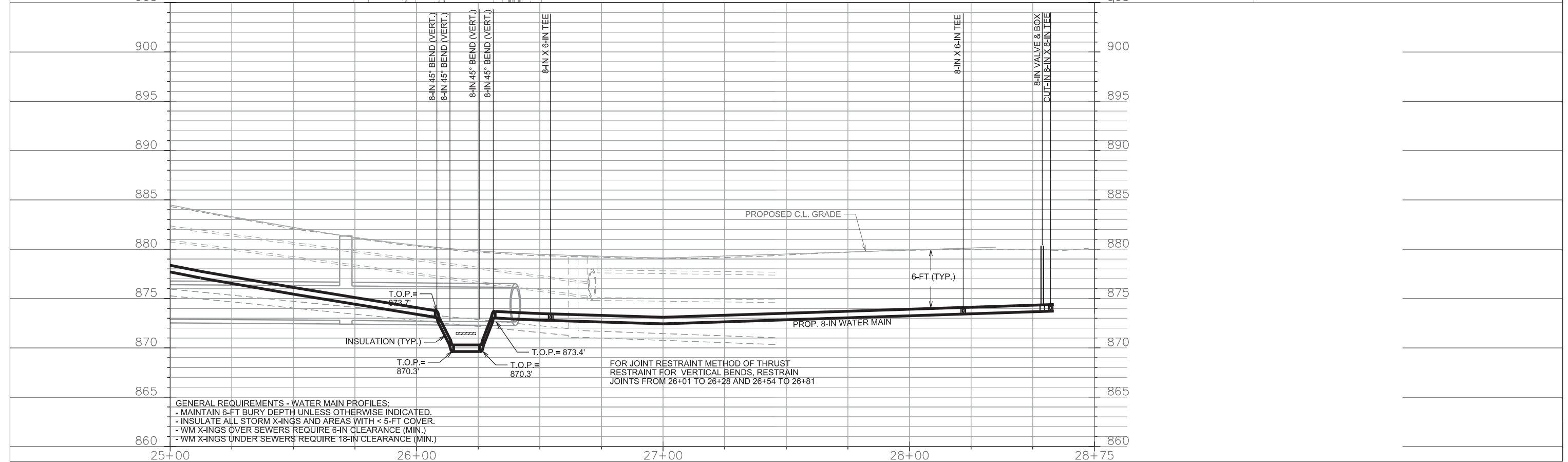
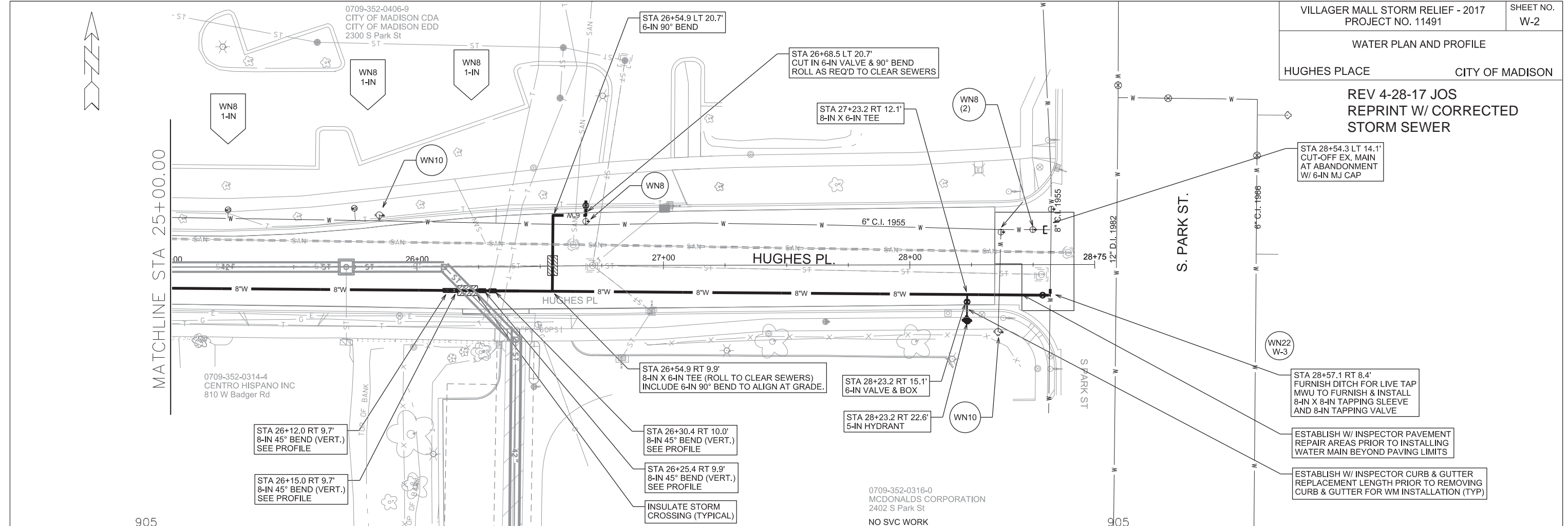
PLOT SCALE:

PLOT NAME:

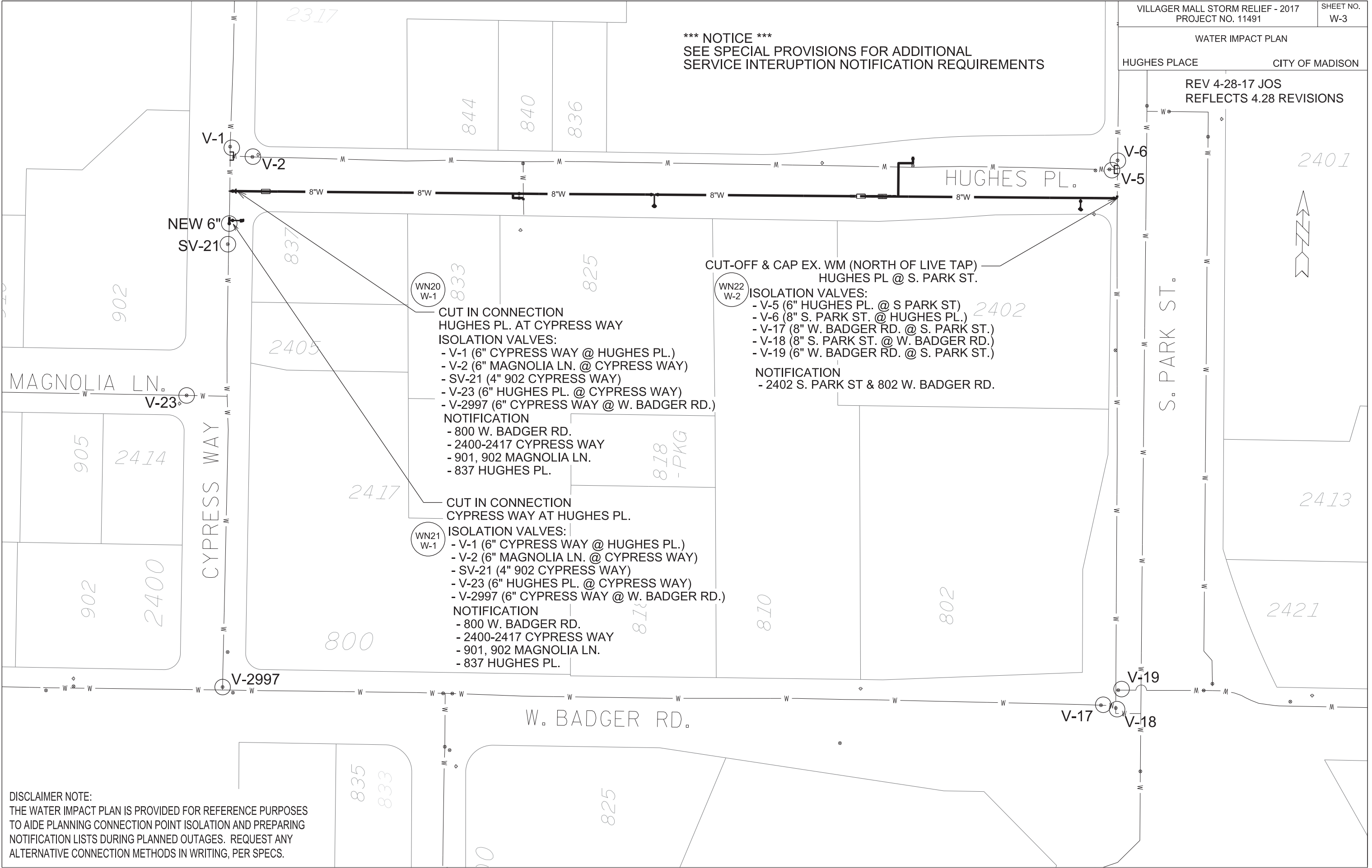
REV. DATE:

ORIGINATOR: CITY OF MADISON, STREETS DIVISION

REV 4-28-17 JOS
REPRINT W/ CORRECTED
STORM SEWER



*** NOTICE ***
SEE SPECIAL PROVISIONS FOR ADDITIONAL
SERVICE INTERUPTION NOTIFICATION REQUIREMENTS



CUT IN CONNECTION
HUGHES PL. AT CYPRESS WAY
ISOLATION VALVES:
- V-1 (6" CYPRESS WAY @ HUGHES PL.)
- V-2 (6" MAGNOLIA LN. @ CYPRESS WAY)
- SV-21 (4" 902 CYPRESS WAY)
- V-23 (6" HUGHES PL. @ CYPRESS WAY)
- V-2997 (6" CYPRESS WAY @ W. BADGER RD.)
NOTIFICATION
- 800 W. BADGER RD.
- 2400-2417 CYPRESS WAY
- 901, 902 MAGNOLIA LN.
- 837 HUGHES PL.

CUT IN CONNECTION
CYPRESS WAY AT HUGHES PL.
ISOLATION VALVES:
- V-1 (6" CYPRESS WAY @ HUGHES PL.)
- V-2 (6" MAGNOLIA LN. @ CYPRESS WAY)
- SV-21 (4" 902 CYPRESS WAY)
- V-23 (6" HUGHES PL. @ CYPRESS WAY)
- V-2997 (6" CYPRESS WAY @ W. BADGER RD.)
NOTIFICATION
- 800 W. BADGER RD.
- 2400-2417 CYPRESS WAY
- 901, 902 MAGNOLIA LN.
- 837 HUGHES PL.

CUT-OFF & CAP EX. WM (NORTH OF LIVE TAP)
HUGHES PL @ S. PARK ST.
ISOLATION VALVES:
- V-5 (6" HUGHES PL. @ S PARK ST.)
- V-6 (8" S. PARK ST. @ HUGHES PL.)
- V-17 (8" W. BADGER RD. @ S. PARK ST.)
- V-18 (8" S. PARK ST. @ W. BADGER RD.)
- V-19 (6" W. BADGER RD. @ S. PARK ST.)
NOTIFICATION
- 2402 S. PARK ST & 802 W. BADGER RD.

DISCLAIMER NOTE:
THE WATER IMPACT PLAN IS PROVIDED FOR REFERENCE PURPOSES
TO AIDE PLANNING CONNECTION POINT ISOLATION AND PREPARING
NOTIFICATION LISTS DURING PLANNED OUTAGES. REQUEST ANY
ALTERNATIVE CONNECTION METHODS IN WRITING, PER SPECS.

PLOT SCALE: _____ PLOT NAME: _____ REV. DATE: _____ ORIGINATOR: CITY OF MADISON, STREETS DIVISION

REV 4-28-17 JOS
REFLECTS 4.28 REVISIONS

CONSTRUCTION NOTES:

1. CONSTRUCT NEW WATER MAIN 6.0' BELOW FINISHED GRADE, UNLESS OTHERWISE NOTED. INSULATE MAIN WITH POLYSTYRENE BOARD AT UTILITY CROSSINGS OR OTHER AREAS IDENTIFIED BY ENGINEER AS HAVING INADEQUATE COVER.
 2. VERIFY SIZE OF EXISTING WATER SERVICES AND RECONNECT SERVICES AS INDICATED.
 3. MINIMIZE DISRUPTION OF SERVICE TO EXISTING CUSTOMERS. NOTIFY PER CONTRACT REQUIREMENTS OF ANY PLANNED WATER OUTAGE.
 4. THE EXISTING UTILITIES SHOWN ON THIS PLAN REPRESENT THE BEST INFORMATION AVAILABLE TO THE WATER UTILITY AT THE TIME OF PLAN PREPARATION. CONTRACTOR IS RESPONSIBLE FOR HAVING EACH UTILITY LOCATED PRIOR TO COMMENCING WORK.
- WN1 REPLACE THE EXISTING LEAD SERVICE WITH A NEW COPPER SERVICE.
 WN2 EXTEND AND RECONNECT THE EXISTING COPPER SERVICE TO THE NEW WATER MAIN.
 WN3 EXISTING SERVICE TO BE ABANDONED WHEN THE WATER MAIN IS CUT OFF.
 WN4 DISCONNECT FROM THE OLD WATER MAIN AND RECONNECT THE EXISTING COPPER WATER SERVICE LATERAL TO THE NEW WATER MAIN.
 WN5 RELOCATE THE EXISTING FIRE HYDRANT.
 WN6 ABANDON WATER VALVE ACCESS STRUCTURE.
 WN7 FURNISH AND INSTALL THE NEW TOP SECTION FOR THE WATER ACCESS STRUCTURE.
 WN8 ABANDON THE VALVE BOX.
 WN9 FURNISH THE DITCH, COMPACTION, AND ALL MATERIALS AND LABOR FOR THE INSTALLATION OF NEW SERVICE LATERAL.
 WN10 REMOVE AND SALVAGE EXISTING HYDRANT
 WN11 REPLACE THE EXISTING COPPER SERVICE WITH A COPPER SERVICE
 WN20+ SEE WATER IMPACT PLAN FOR CONNECTION POINT ISOLATION AND WATER SHUT-OFF NOTFICATION INFORMATION.

ESTIMATE OF MATERIALS SUPPLIED BY CONTRACTOR:
* ESTIMATE OF MATERIALS IS FOR INFORMATION ONLY. ENGINEER DOES NOT GUARANTEE ACCURACY OF MATERIAL TAKE-OFF.

- | | |
|----------------------|--------------------------|
| 110-FT - 6-IN PIPE | 5 - 6-IN 90° BEND |
| 820-FT - 8-IN PIPE | 4 - 8-IN 45° BEND |
| 6 - 6-IN VALVE & BOX | 2 - 6-IN MJ CAP |
| 3 - 8-IN VALVE & BOX | 3 - HYDRANT |
| 2 - 6-IN X 6-IN TEE | 1 - 8-IN TO 6-IN REDUCER |
| 4 - 8-IN X 6-IN TEE | 970-FT - POLY WRAP |
| | 40 - FT INSULATION |

MATERIALS SUPPLIED BY CITY:
* ESTIMATE OF MATERIALS IS FOR INFORMATION ONLY. ENGINEER DOES NOT GUARANTEE ACCURACY OF MATERIAL TAKE-OFF.

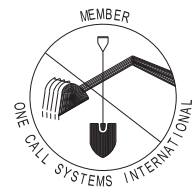
- 1 - 8-IN X 8-IN TAPPING SLEEVE
1 - 8-IN TAPPING VALVE

DISCLAIMER NOTE:
UTILITY LOCATIONS SHOWN ARE APPROXIMATE ONLY. IT SHALL BE THE CONTRACTOR'S RESPONSIBILITY TO DETERMINE THE EXACT HORIZONTAL AND VERTICAL LOCATION OF ALL EXISTING UNDERGROUND AND OVERHEAD UTILITIES PRIOR TO COMMENCING WORK.

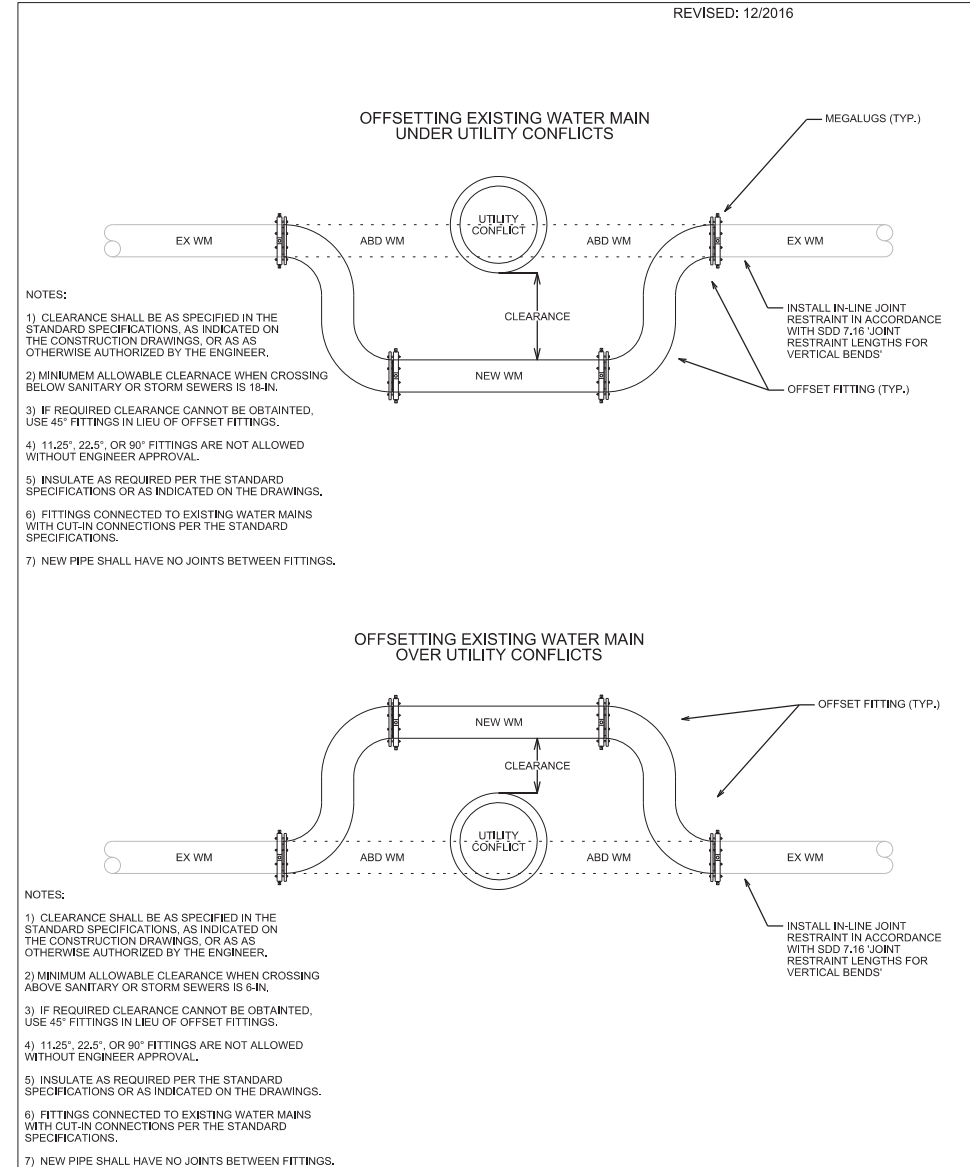
TO OBTAIN LOCATION OF PARTICIPANTS' UNDERGROUND FACILITIES BEFORE YOU DIG IN WISCONSIN

CALL DIGGERS HOTLINE
TOLL FREE
811 OR 1-800-242-8511
FAX-A-LOCATE 1-800-338-3860
TDD (FOR HEARING IMPAIRED) 1-800-542-2289

WIS. STATUTE 182.0175 (1974)
REQUIRES MIN. OF 3 WORK DAYS
NOTICE BEFORE YOU EXCAVATE.

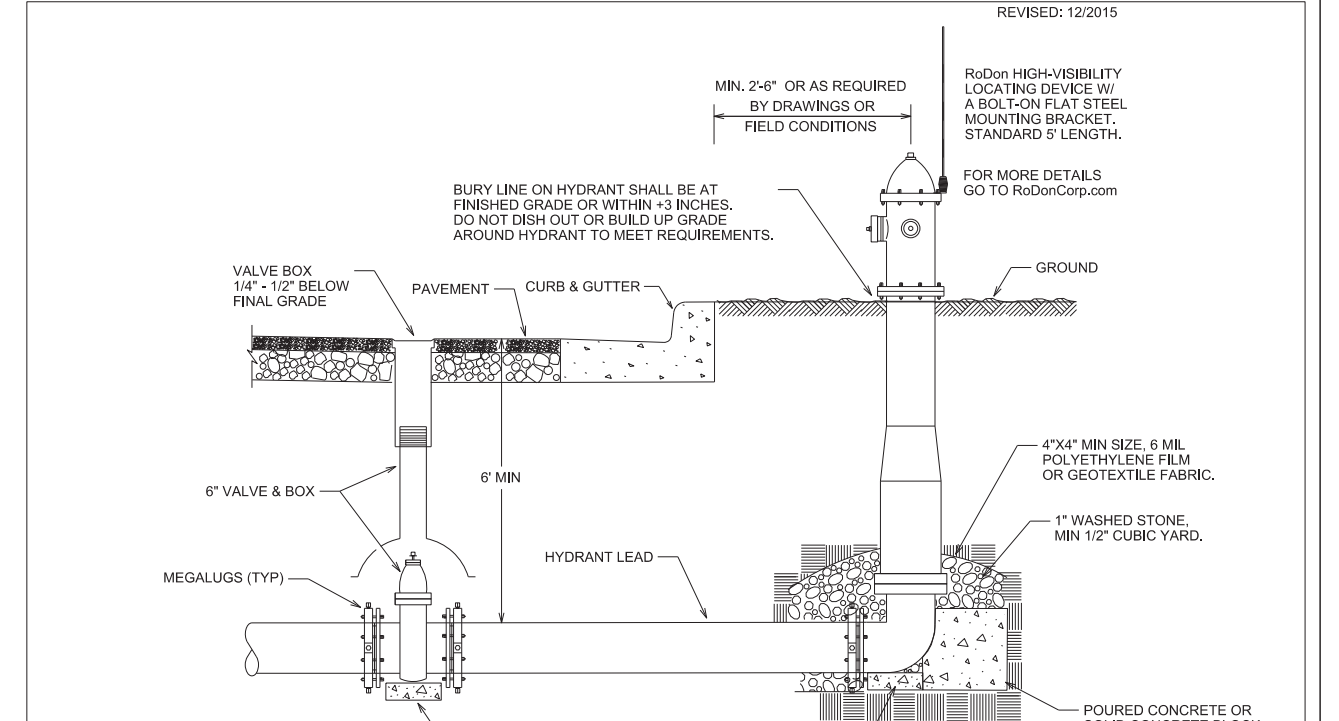


PART VII - WATER MAINS AND SERVICE LATERALS
DETAIL DRAWING NO. 7.22
REVISED: 12/2016



CITY OF MADISON WATER UTILITY
NOT TO SCALE
OFFSETTING EXISTING WATER MAIN UNDER UTILITY CONFLICTS

PART VII - WATER MAINS AND SERVICE LATERALS
DETAIL DRAWING NO. 7.04
REVISED: 12/2015



CITY OF MADISON WATER UTILITY
NOT TO SCALE
TYPICAL HYDRANT INSTALLATION

PLOT SCALE: _____

PLOT NAME: _____

REV. DATE: _____

ORIGINATOR: CITY OF MADISON, STREETS DIVISION